

# Franklyn James



## 20 Copenhagen Place

, London, E14 7DX

Asking Price £575,000

CHAIN FREE - Presented in immaculate condition is this impressive two double bedroom modern apartment set on the first floor within the much sought after Andersens Wharf development. Accommodation comprises of main entrance with entry phone system, entrance hall with storage cupboard, spacious open-plan reception room with dining/kitchen area and access to a large private balcony, master bedroom, second double bedroom and a contemporary styled bathroom. Additional features include onsite maintenance manager and one allocated parking space. This property is perfectly located for Mile End Station which provides a great service on District and Central Line. Limehouse & Westferry DLR are also a short walk away, with direct links to the City and Canary Wharf. Please call to arrange a viewing.

- Vacant possession
- Prime location
- Spacious living accommodation
- Ideal first time buy
- Immaculately presented
- Canal views
- Easy access to Canary Wharf & The City of London
- Secure underground parking
- Storage facility for bikes

Viewing

Please contact our Limehouse Sales Office on 02077911777 if you wish to arrange a viewing appointment for this property or require further information.



2



2



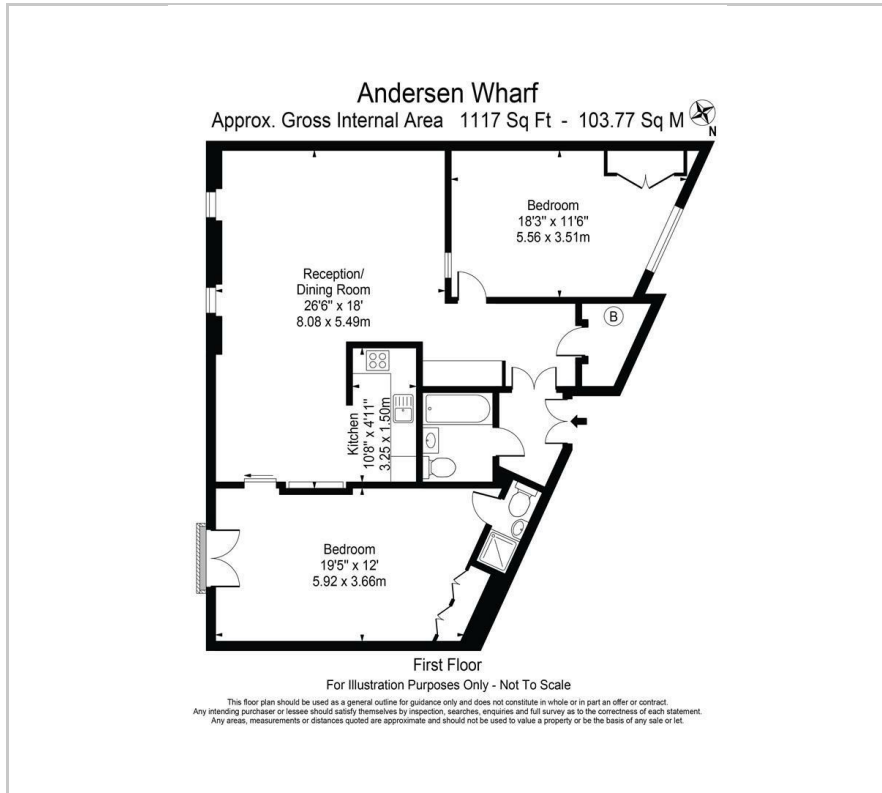
1



B

Franklyn James

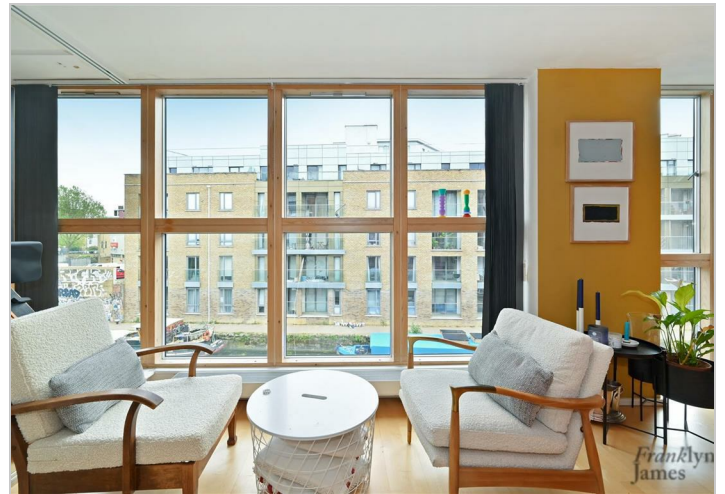
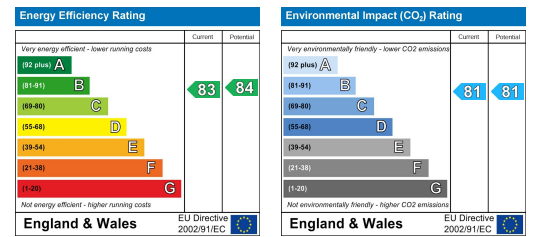
# Floor Plan



# Area Map



# Energy Efficiency Graph



These particulars, whilst believed to be accurate are set out as a general outline only for guidance and do not constitute any part of an offer or contract. Intending purchasers should not rely on them as statements of representation of fact, but must satisfy themselves by inspection or otherwise as to their accuracy. No person in this firm's employment has the authority to make or give any representation or warranty in respect of the property.